



ALUMINUM



**CMS**

**CONTROLE MESURE SYSTEMES**

*Eddy Current and Ultrasonic Non-Destructive Testing Solutions*

[www.cmseddyscan.com](http://www.cmseddyscan.com)



*Made in France*





*Aluminum parts are critical components for the Automotive, Aerospace, Military and Food Industries.*

*CMS provides customized and turnkey solutions to guarantee an efficient and reliable quality inspection for your Aluminum parts using Eddy Current.*

## ► Inspection of Tubes, Bars and Wires



Inspection using Eddy Current encircling or segment coil to detect surface and sub-surface short and transverse defects. An optional flux leakage winding can be added to detect magnetic inclusions inside your tubes, bars and wires.

Results are displayed in real time on our Eddy Current electronics **Zet@Premium**. The user-friendly interface of our software allows the operator to fine tune the Eddy Current settings and automatically creates inspection reports.

## ► Inspection of Pistons



CMS designs and manufactures  
Eddy Current probes for specific applications.

This rotating equipment is used to detect surface and sub-surface defects in piston bore and combustion chamber. It is managed by our multi-channel and multi-frequency Eddy Current generator **Zet@Master**.



*Customized equipment  
for high quality solutions*



## ► Strip Inspection

Detection of surface and sub-surface defects in the continuous cast of aluminum strips. The in-line, high speed inspection occurs directly after the furnace. The strip passes through a mechanical head hosting Eddy Current probes, to inspect both the top and bottom surfaces simultaneously.

The multi-channel and multi-frequency electronic, **Zet@Master**, associated with our tailor-made software ensure a 100% inspection.

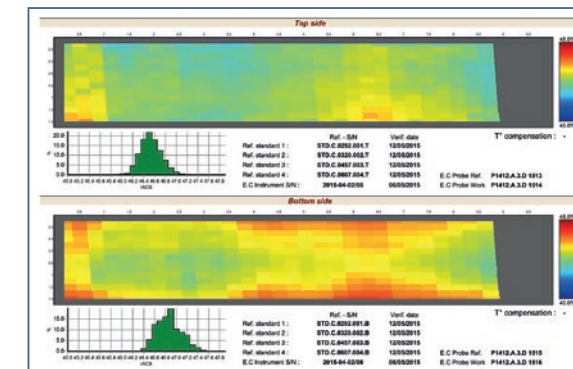


## ► Conductivity Measurements of Plates

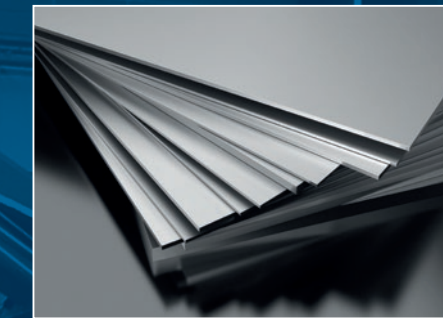
Eddy Current can be used to measure the conductivity on both sides of large aluminum plates.

The product is inspected by 2 Eddy Current heads traveling across the surface. The system includes a live lift-off correction to achieve highly accurate results.

The multi-channel and multi-frequency instrument **Zet@Master** is associated with a dedicated software to display the conductivity dispersion of the plate in real time.



## NDT Solutions for Every Application



We provide NDT solutions designed to inspect aluminum parts in Automotive, Aerospace, Military and Food industries: tubes, bars, wires, strips, plates, pistons, and more.



*Find all  
our equipment  
on our website:*



[www.cmseddyscan.com](http://www.cmseddyscan.com)



Thanks to our know-how, long-term expertise in NDT, and skilled technical crews, CMS is able to offer the entire handling system with PLC automation.

Our Eddy Current and Ultrasonic testing equipment allow 100% inspection of your products.

Join many other industry leaders who have trusted us for their NDT needs worldwide.

Find out more on our website:  
[www.cmseddyscan.com](http://www.cmseddyscan.com)



*Made in France*

Founded in 1988,  
**CONTROLE MESURE SYSTEMES (C.M.S)**  
is a French private and independent  
company based in Burgundy.

We design and develop a full range of high performance Non-Destructive Testing equipment (NDT): instruments, Eddy Current and Ultrasonic rotating heads, ET probes and UT transducers as well as a full range of accessories. We work with the following industrial sectors: Aeronautics, Automotive, Oil & Gas, Nuclear, Steel and Railway.

Our teams of engineers specialized in R&D, mechanical, electrical, and software, innovate in state of the art technologies to ensure a constant improvement of our products. We offer high performance and customized solutions that are fully adapted to the quality requirements of our customers.

*We export our know-how worldwide through our subsidiaries and our network of agents, enabling us to be one of the leading suppliers in Eddy Current and Ultrasonic Non Destructive Testing.*

## Contact us

### CONTROLE MESURE SYSTEMES

6 rue des Loches  
71100 Sevrey - FRANCE

Phone: +33 3 85 94 14 14

Email: [contactcms@cmseddyscan.com](mailto:contactcms@cmseddyscan.com)